

# 数字原生引擎 EOS

## 常见问题

产品版本: v6.0.2

发布日期: 2023-10-26

# 目录

1 常见问题 .....	1
1.1 自动化中心 .....	1

# 1 常见问题

## 1.1 自动化中心

### 产品许可过期怎么办，环境会是什么状态

您的环境如果产品许可过期，您的系统将无法部署新的云主机，已有的云主机仍然能继续提供服务，请您联系您的供应商购买更新新的产品许可并通过CAS更新到您的环境当中。

### 如何登录IPMI Web界面

把 PC 端网段设为与服务器相同的网段，用网线与服务器的 LAN 接口连接。



打开 WEB 浏览器，输入先前在 **IPMI配置** 下设置的 **BMC IP**，回车会进入登录界面；输入账号(默认Admin)和密码(默认20!8Easy)登录，如下图：



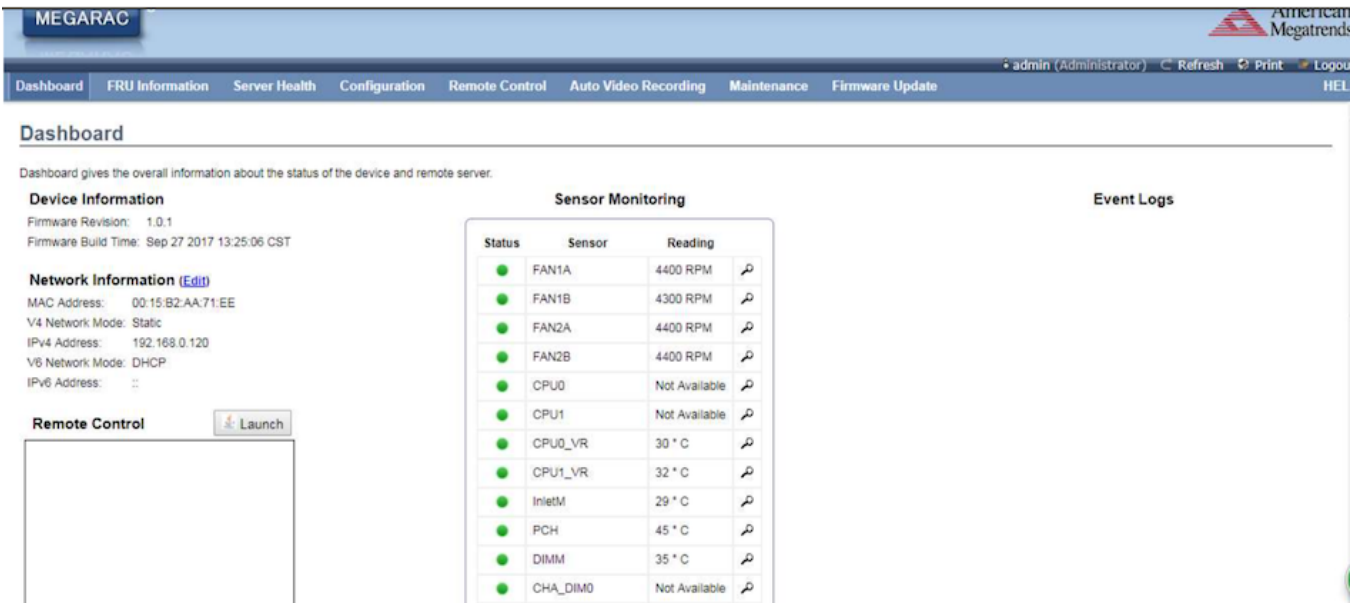
Username:   
Password:   
[Forgot Password?](#)

**Required Browser Settings**

1. Allow popups from this site
2. Allow file download from this site: (How to [?>](#))
3. Enable javascript for this site
4. Enable cookies for this site

It is recommended not to use Refresh, Back and Forward options of the browser.

成功登录后，网页图形使用者界面将出现，如下图：



系统信息(FRU Information)，此部分介绍系统中各个 FRU 装置的信息概况。



### Field Replaceable Unit(FRU)

This page gives detailed information for the various FRU devices present in this system.

#### Basic Information:

FRU Device ID: 0  
FRU Device Name: BMC\_FRU

#### Chassis Information:

Chassis Information Area Format Version: 1  
Chassis Type: Main Server Chassis  
Chassis Part Number: X4BC06H0A10XXXXXP  
Chassis Serial Number: C15-17081400600005  
Chassis Extra:

#### Board Information:

Board Information Area Format Version: 1  
Language: 0  
Manufacture Date Time: Fri Jan 8 16:41:00 2016

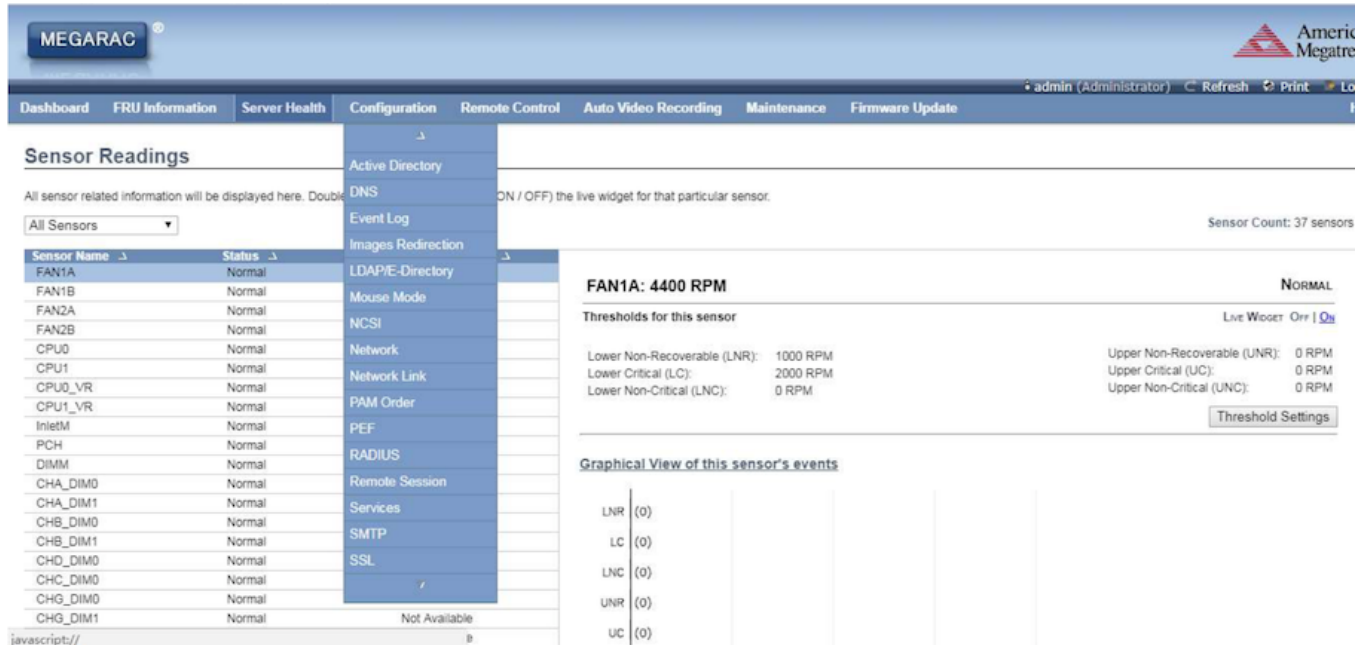
服务器状况(Server Health)，此部分显示与服务器状况相关的资料，如监控器信息与事件日志。点选每个选项查看此选项的信息。



监控信息(Sensor Readings (with Thresholds))， Sensor Readings 页面显示系统监控器信息，包括监控值与监控状态。另外，在服务器主板或前端面板上有信息指示灯显示硬件的异常信息，可参考主板或服务器相关使用手册。

事件日志(Event Log), Event Log 页面显示系统事件日志。当 CPU、内存、背板硬盘等硬件出现异常时, 将会记录在 Event Log 以提示状况。

设定(Configuration), 此部分用于对系统进行设定。选择每个选项开始进行设定。



Active Directory, 有多项功能, 包括提供对象信息、组织对象以便更好地进行访问、允许使用者和管理员存取、以及允许管理员设定目录安全。要开启 **Active Directory** 设定页面, 从主菜单选择 **Configuration>Active Directory**。

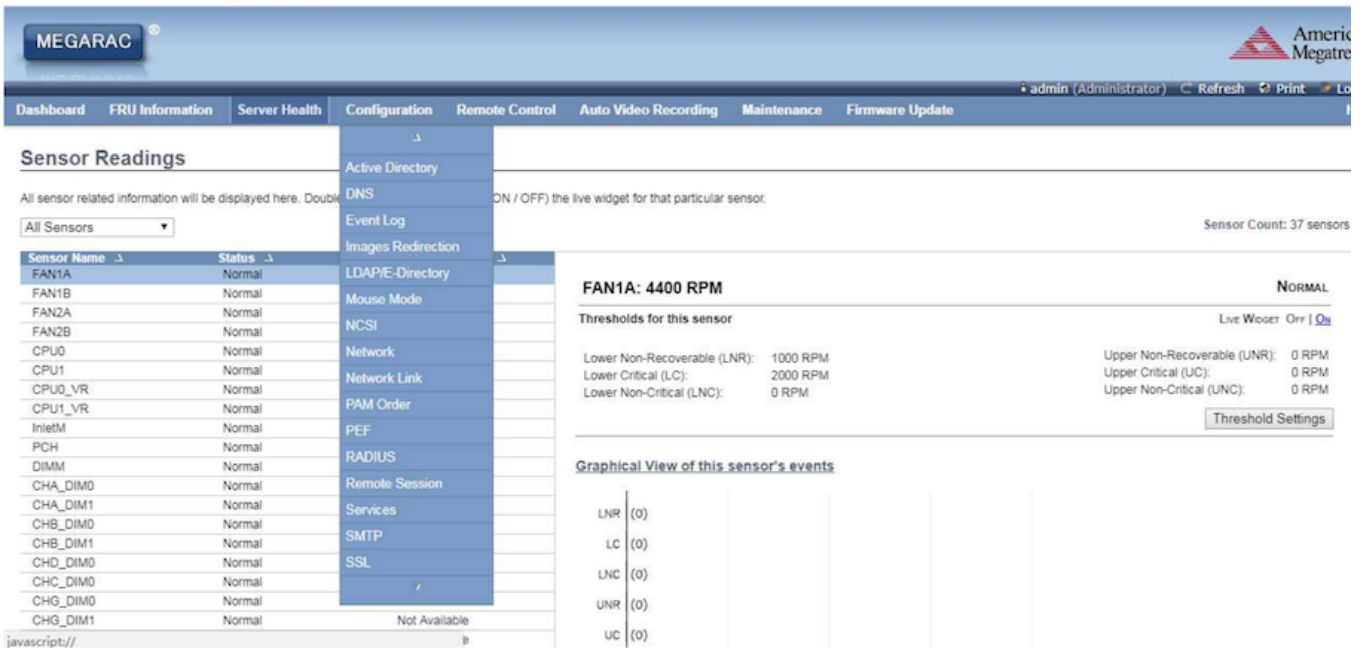
**DNS** 此页面用来管理装置的 **DNS** 设定。

**Event Log** 此页面用来设定系统事件记录信息。

**网络(Network)**, **Network** 页面用于设定网络。

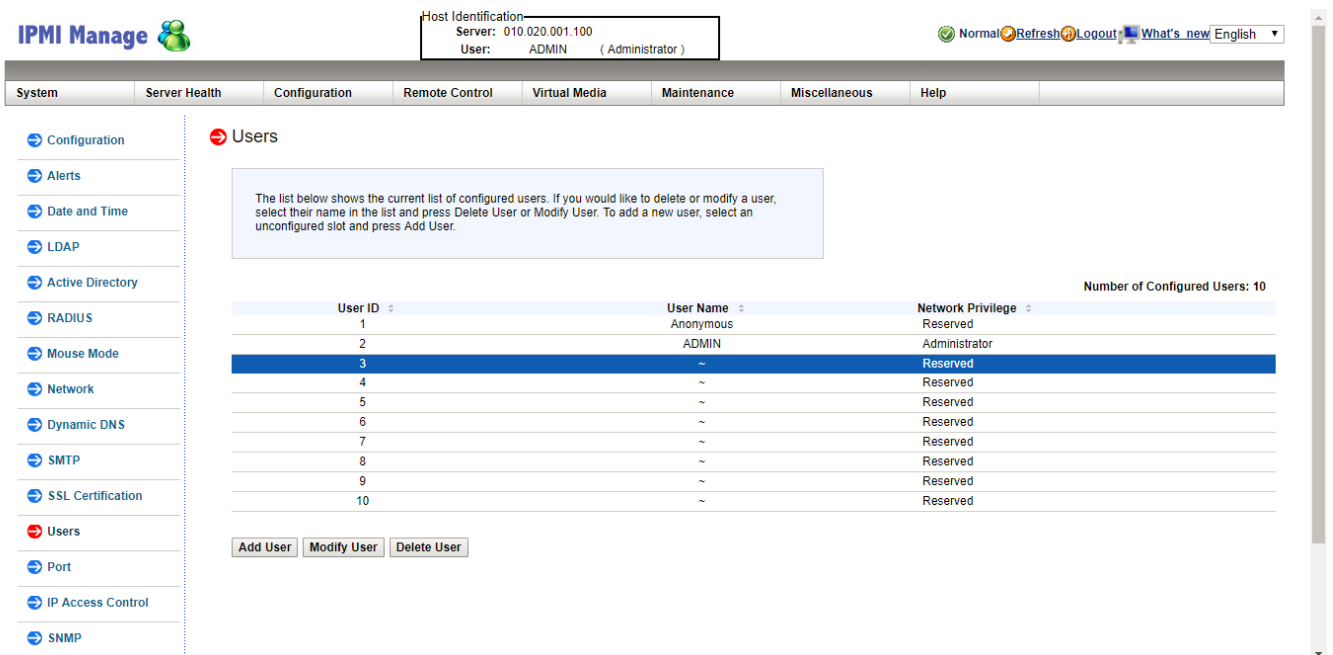
### BMC固件升级

点击 **BMC WEB** 界面里的子菜单 1(Firmware Update), 进入下图界面。不要勾选图中标注的 2, 直接点击 3(Enter Update Mode), 进入下一步按提示选择 **BMC** 文件, 点击更新, **BMC** 固件会进行更新, 更新完毕后 **BMC** 自动重启。



## 如何修改IPMI用户信息

登录到节点IPMI Web界面后，在左侧菜单中选择 **Users**，您将看到如下页面。页面中将呈现当前IPMI中所有的用户信息。



点击选中空白（没有用户信息）处，点击底部 **Add User** 按钮，进入到如下添加用户页面。

The screenshot displays the IPMI Manage web interface. At the top left is the 'IPMI Manage' logo. The top right shows 'Host Identification' with 'Server: 010.020.001.100' and 'User: ADMIN (Administrator)'. A navigation bar includes 'System', 'Server Health', 'Configuration', 'Remote Control', 'Virtual Media', 'Maintenance', 'Miscellaneous', and 'Help'. A left sidebar lists various configuration options: Configuration, Alerts, Date and Time, LDAP, Active Directory, RADIUS, Mouse Mode, Network, Dynamic DNS, SMTP, SSL Certification, Users, Port, IP Access Control, and SNMP. The main content area is titled 'Add New User' and contains a form with the following fields: 'User Name', 'Password', 'Confirm Password', and 'Network Privileges'. The 'Network Privileges' dropdown menu is open, showing options: Administrator, Operator, User, and No Access. Below the form are 'Add' and 'Cancel' buttons. A message box at the top of the form reads: 'Enter the new user information below and press Add. Press Cancel to return to the user list.'

信息填写完成后，即可添加一个新用户。



Host Identification  
Server: 010.020.001.100  
User: ADMIN (Administrator)

Normal Refresh Logout What's new English

System Server Health Configuration Remote Control Virtual Media Maintenance Miscellaneous Help

Configuration Alerts Date and Time LDAP Active Directory RADIUS Mouse Mode Network Dynamic DNS SMTP SSL Certification Users Port IP Access Control SNMP

**Add New User**

Enter the new user information below and press Add. Press Cancel to return to the user list.

User Name: test  
Password: .....  
Confirm Password: .....  
Network Privileges: Administrator

10.20.1.100 显示  
User was added successfully!

确定

Add Cancel

Host Identification  
Server: 010.020.001.100  
User: ADMIN (Administrator)

Normal Refresh Logout What's new English

System Server Health Configuration Remote Control Virtual Media Maintenance Miscellaneous Help

Configuration Alerts Date and Time LDAP Active Directory RADIUS Mouse Mode Network Dynamic DNS SMTP SSL Certification Users Port IP Access Control SNMP

**Users**

The list below shows the current list of configured users. If you would like to delete or modify a user, select their name in the list and press Delete User or Modify User. To add a new user, select an unconfigured slot and press Add User.

Number of Configured Users: 10

User ID	User Name	Network Privilege
1	Anonymous	Reserved
2	ADMIN	Administrator
3	test	Administrator
4	~	Reserved
5	~	Reserved
6	~	Reserved
7	~	Reserved
8	~	Reserved
9	~	Reserved
10	~	Reserved

Add User Modify User Delete User

若需要删除某个用户，则选中该用户，点击底部 **Delete User** 按钮。（警告：root用户无法被删除。）

Host Identification  
Server: 010.020.001.100  
User: ADMIN (Administrator)

Normal Refresh Logout What's new English

System Server Health Configuration Remote Control Virtual Media Maintenance Miscellaneous Help

Configuration Alerts Date and Time LDAP Active Directory RADIUS Mouse Mode Network Dynamic DNS SMTP SSL Certification Users Port IP Access Control SNMP

Users

The list below shows the current list of configured users. If you would like to delete or modify a user, select their name in the list and press Delete User or Modify User. To add a new user, select an unconfigured slot and press Add User.

10.20.1.100 显示  
Do you want to delete this user?

确定 取消

User ID	Username	Network Privilege
1		Reserved
2		Administrator
3	test	Administrator
4	~	Reserved
5	~	Reserved
6	~	Reserved
7	~	Reserved
8	~	Reserved
9	~	Reserved
10	~	Reserved

Add User Modify User Delete User

Number of Configured Users: 10

Host Identification  
Server: 010.020.001.100  
User: ADMIN (Administrator)

Normal Refresh Logout What's new English

System Server Health Configuration Remote Control Virtual Media Maintenance Miscellaneous Help

Configuration Alerts Date and Time LDAP Active Directory RADIUS Mouse Mode Network Dynamic DNS SMTP SSL Certification Users Port IP Access Control SNMP

Users

The list below shows the current list of configured users. If you would like to delete or modify a user, select their name in the list and press Delete User or Modify User. To add a new user, select an unconfigured slot and press Add User.

10.20.1.100 显示  
User has been deleted.

确定

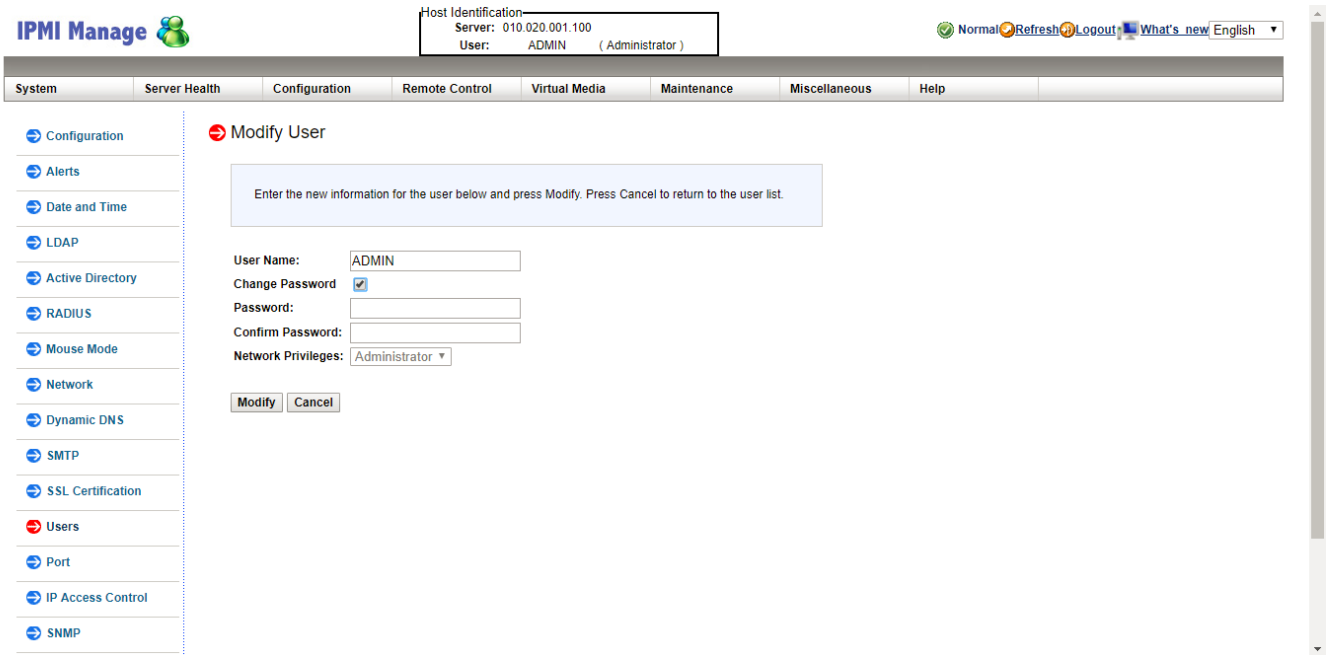
User ID	Username	Network Privilege
1		Reserved
2		Administrator
3	test	Administrator
4	~	Reserved
5	~	Reserved
6	~	Reserved
7	~	Reserved
8	~	Reserved
9	~	Reserved
10	~	Reserved

Add User Modify User Delete User

Number of Configured Users: 10

LOADING...

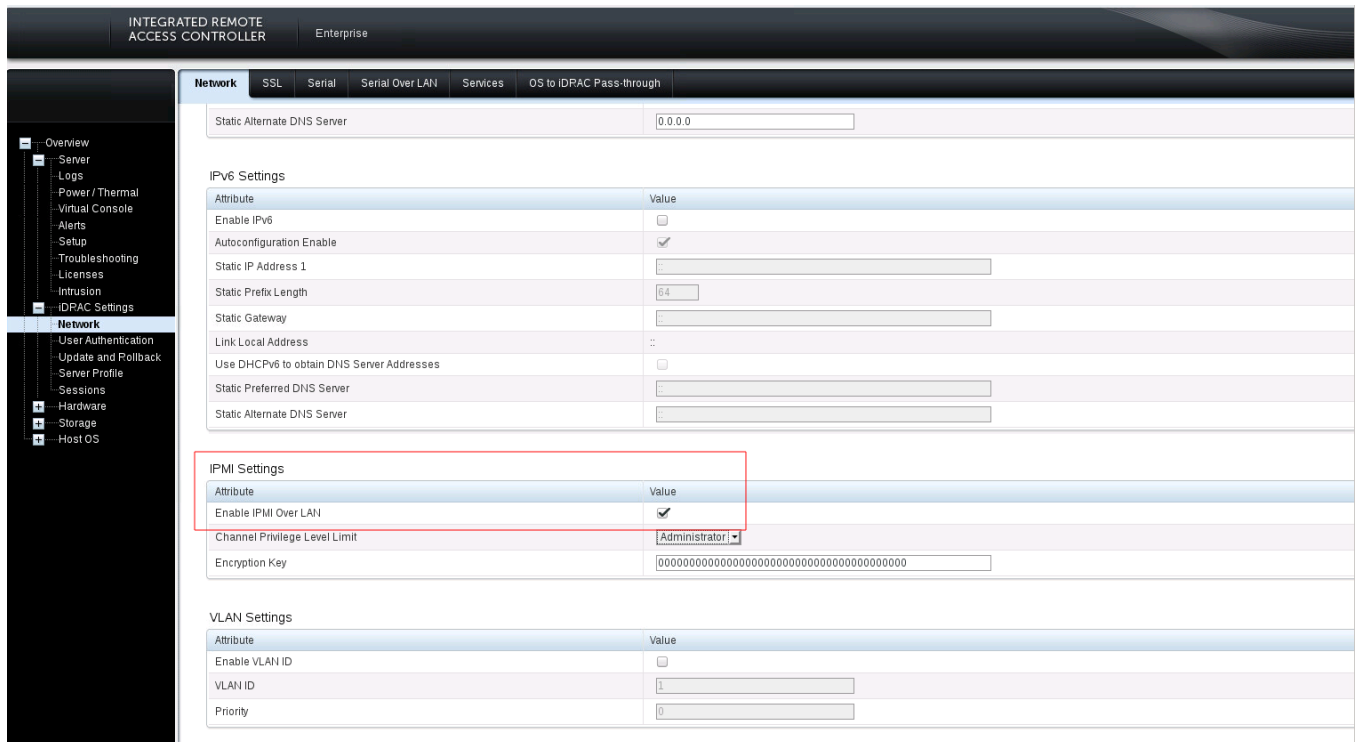
若您需要修改某个用户的用户名/密码，选中该用户，点击底部 **Modify User** 按钮，进入页面后，修改用户信息，但用户权限无法修改。



至此，节点IPMI用户信息修改完成，其他型号机器修改步骤如上类似。

## 如何远程连接IPMI查看节点电源状态

您如果想通过IPMI查看节点电源状态，请您在iDRAC中Network选项卡配置Enable IPMI over Lan



**咨询热线：400-100-3070**

北京易捷思达科技发展有限公司：

北京市海淀区西北旺东路10号院东区1号楼1层107-2号

南京易捷思达软件科技有限公司：

江苏省南京市雨花台区软件大道168号润和创智中心4栋109-110

邮箱：

[contact@easystack.cn](mailto:contact@easystack.cn) (业务咨询)

[partners@easystack.cn](mailto:partners@easystack.cn)(合作伙伴咨询)

[marketing@easystack.cn](mailto:marketing@easystack.cn) (市场合作)